



# SIZING CHART

## AR/FR ANSI Type R Class 3 Heavy Duty Waterproof Breathable Jacket

	S	M	L	XL	2XL	3XL	4XL	5XL
A	48 / 121.9	51 / 129.5	55 / 139.7	59 / 149.9	63 / 160	67 / 170.2	71 / 180.3	74.5 / 189.2
B	33.3 / 84.6	34.3 / 87.1	35.3 / 89.7	36 / 91.4	37 / 94	38 / 96.5	39 / 99.1	40 / 101.6

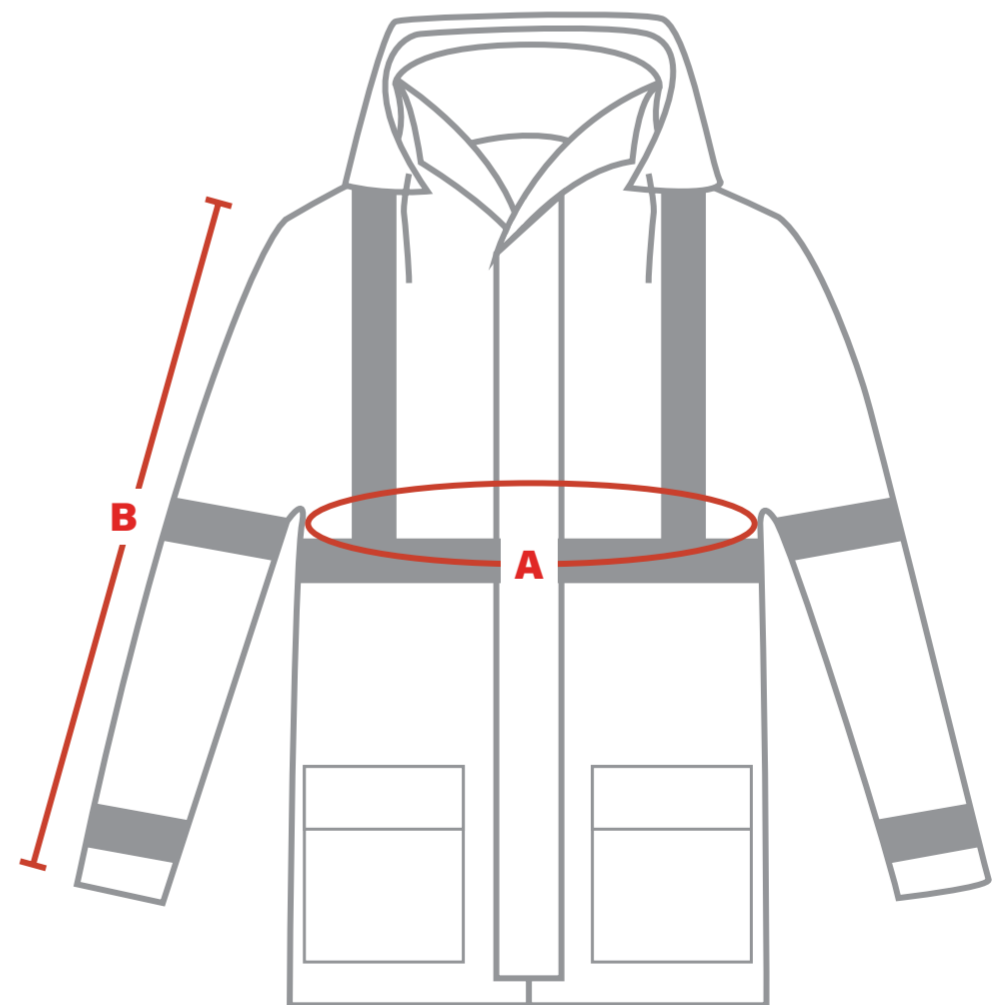
Measurements are in **in/cm**. This chart should be used as a measuring guide only. Garments will vary according to style and fit of the garment.

### How to Measure:

**CHEST (A):** Measure around the fullest part of the chest and shoulder, under the arms with your arms at resting position.

**SLEEVE (B)** Measure from center of shoulders to the wrist.

Remember, your safety garments are worn over your work clothes. Please measure yourself accordingly.





# SIZING CHART

AR/FR ANSI Class E

Heavy Duty Waterproof Breathable Bib Overalls

	S	M	L	XL	2XL	3XL	4XL	5XL
A	28.5 / 72.4	28.8 / 73.2	29 / 73.7	29 / 73.7	29.3 / 74.4	29.3 / 74.4	29.5 / 74.9	29.5 / 74.9
B	49 / 124.5	51.5 / 130.8	54 / 137.2	56 / 142.2	58 / 147.3	60.5 / 153.7	63 / 160	65 / 165.1

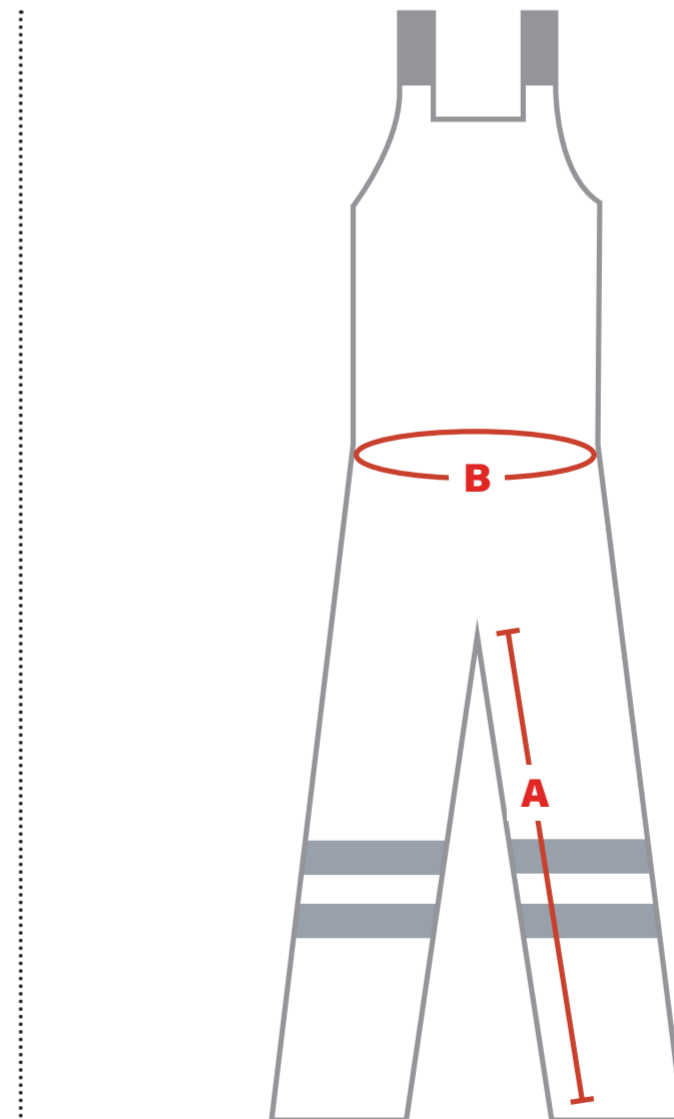
Measurements are in **in/cm**. This chart should be used as a measuring guide only. Garments will vary according to style and fit of the garment.

## How to Measure:

**INSEAM (A):** Measure from ankle to crotch of pant

**WAIST (B):** Measure waist circumference.

Remember, your safety garments are worn over your work clothes. Please measure yourself accordingly.





# SIZING CHART

## AR/FR ANSI Type R Class 3 Value All Purpose 48" Raincoat

	S	M	L	XL	2XL	3XL	4XL	5XL
A	45 / 114.3	48 / 121.9	51 / 129.5	55 / 139.7	59 / 149.9	67 / 170.2	71 / 180.3	74.5 / 189.2
B	33.3 / 84.6	34.3 / 87.1	35.3 / 89.7	36 / 91.4	37 / 94	38 / 96.5	39 / 99.1	40 / 101.6

Measurements are in **in/cm**. This chart should be used as a measuring guide only. Garments will vary according to style and fit of the garment.

### How to Measure:

**CHEST (A):** Measure around the fullest part of the chest and shoulder, under the arms with your arms at resting position.

**SLEEVE (B)** Measure from top of shoulder to the wrist

Remember, your safety garments are worn over your work clothes.  
Please measure yourself accordingly.

